



1637 STOVER CRESCENT
MILTON, ON

ROACH
family
REAL ESTATE TEAM



WELCOME HOME!

One of the first things you'll love is the parking —space for two cars in the driveway plus a single-car garage. A covered front porch welcomes you inside, where you'll feel the freedom this home offers: more space, a real backyard, and no condo fees. The main floor features a front dining room, powder room, inviting living space, and a spacious kitchen with room for an island or table, plus patio doors to the backyard. Upstairs offers three bedrooms, including a primary with walk-in closet and ensuite. The finished basement adds even more flexibility with a wet bar, powder room, and bonus shower—perfect for movie nights, guests, or teens. Set in Milton's Clarke neighbourhood, close to parks and commuter routes.

You'll love calling this home!





Why Families Love Life at 1637 Stover Cres

Families are drawn to the combination of strong school options, plentiful parks and trails, and convenient commuting with local transit and Milton GO. Daily life feels active yet easy, with newer homes providing practical space and comfort. Owner-occupied stability blends with a dynamic, welcoming population. With green spaces, recreation facilities, and accessible travel choices, the neighbourhood offers a well-rounded lifestyle that supports busy schedules and time together.

Schools Close By

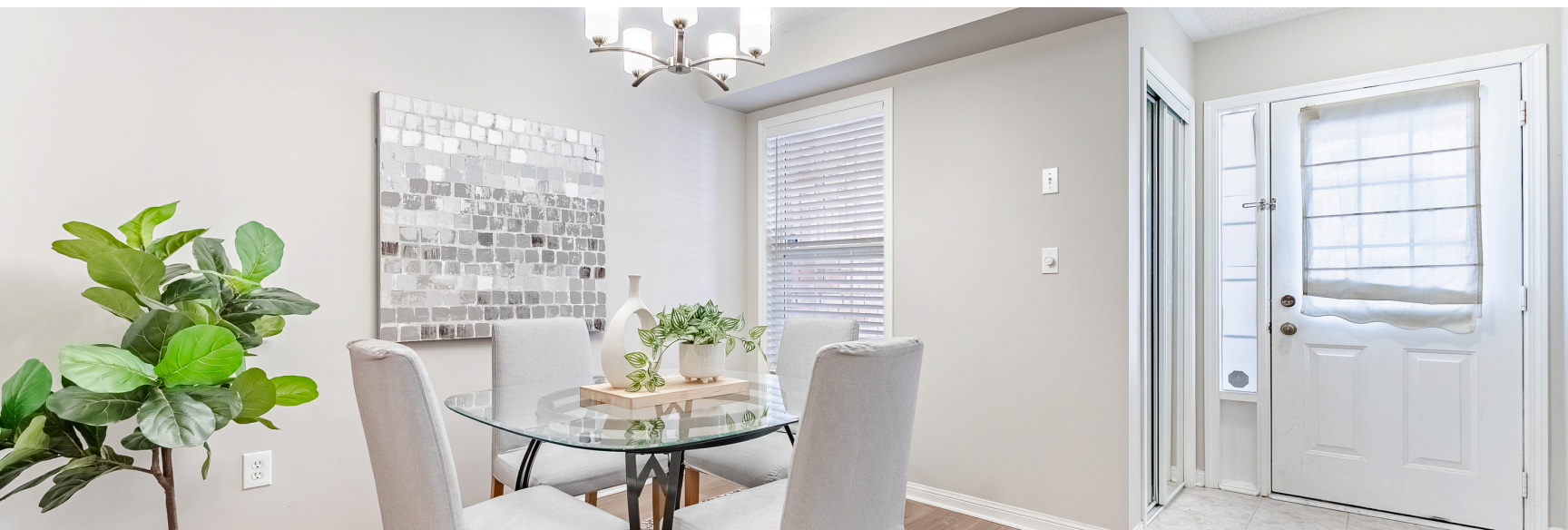
Families benefit from a strong selection of nearby options, including multiple public and Catholic schools. Local offerings include elementary special programs and secondary special programs, with choices such as French Immersion, International Baccalaureate, Advanced Placement, and Gifted/Talented Program. This mix supports varied learning pathways from early years through high school, making it easier to find the right academic fit close to home.

Parks and Recreation

Fun comes naturally with several local parks and a wide range of facilities. Clarke features playgrounds, a dog park, basketball courts, sports fields, a splash pad, a sports court, and trails. With many recreation facilities spread across neighbourhood parks, there's ample space for play, team practices, and fresh-air strolls. Whether it's shooting hoops, enjoying a splash pad, or exploring trails, outdoor time is always close by.



DINING ROOM





FAMILY ROOM





KITCHEN





PRIMARY



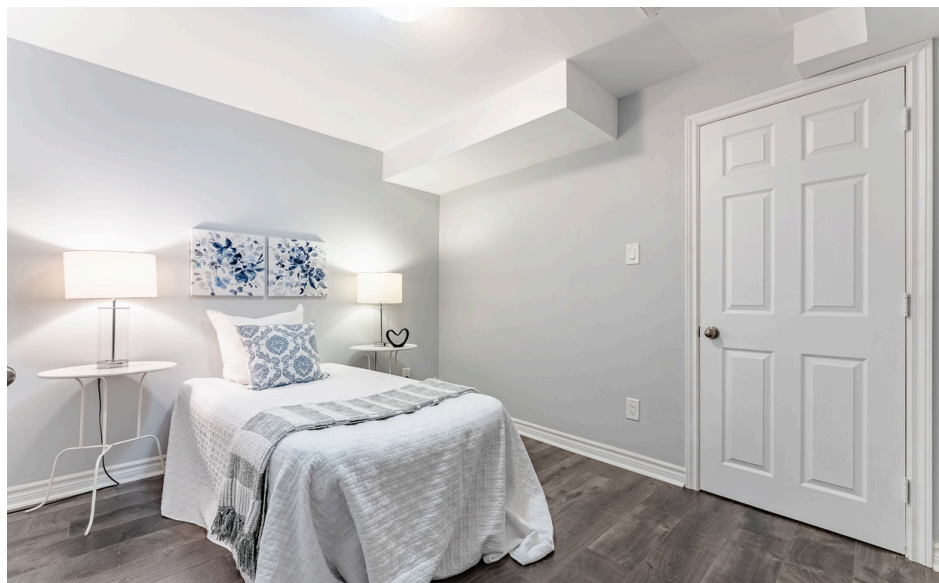


BEDROOMS





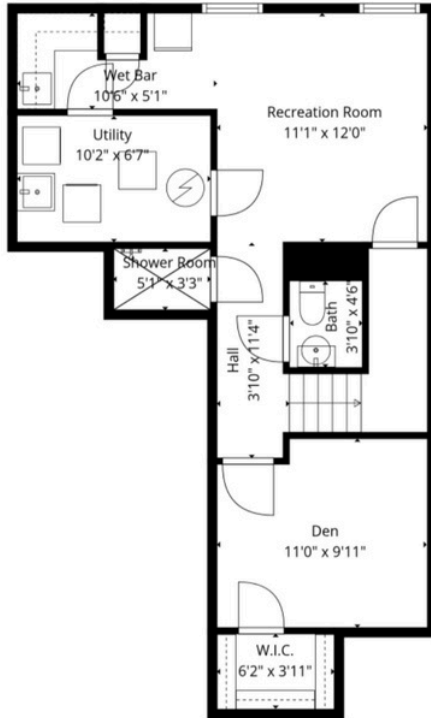
BASEMENT



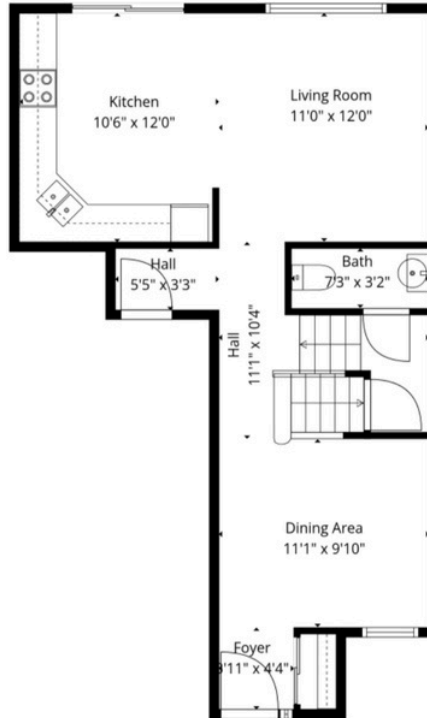
BACKYARD



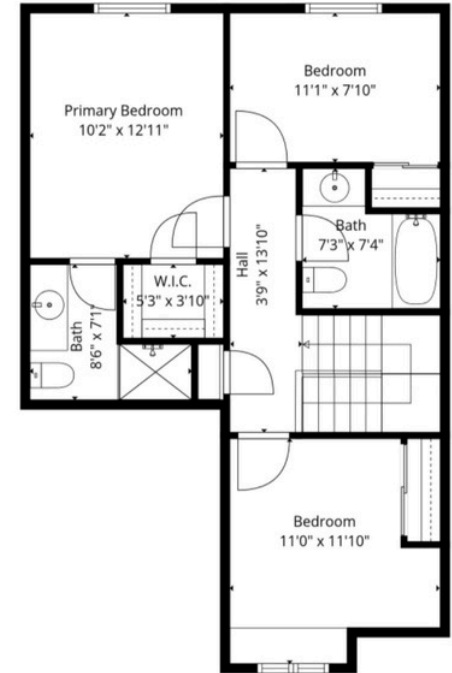
FLOOR PLAN



Basement 1



1st Floor



2nd Floor



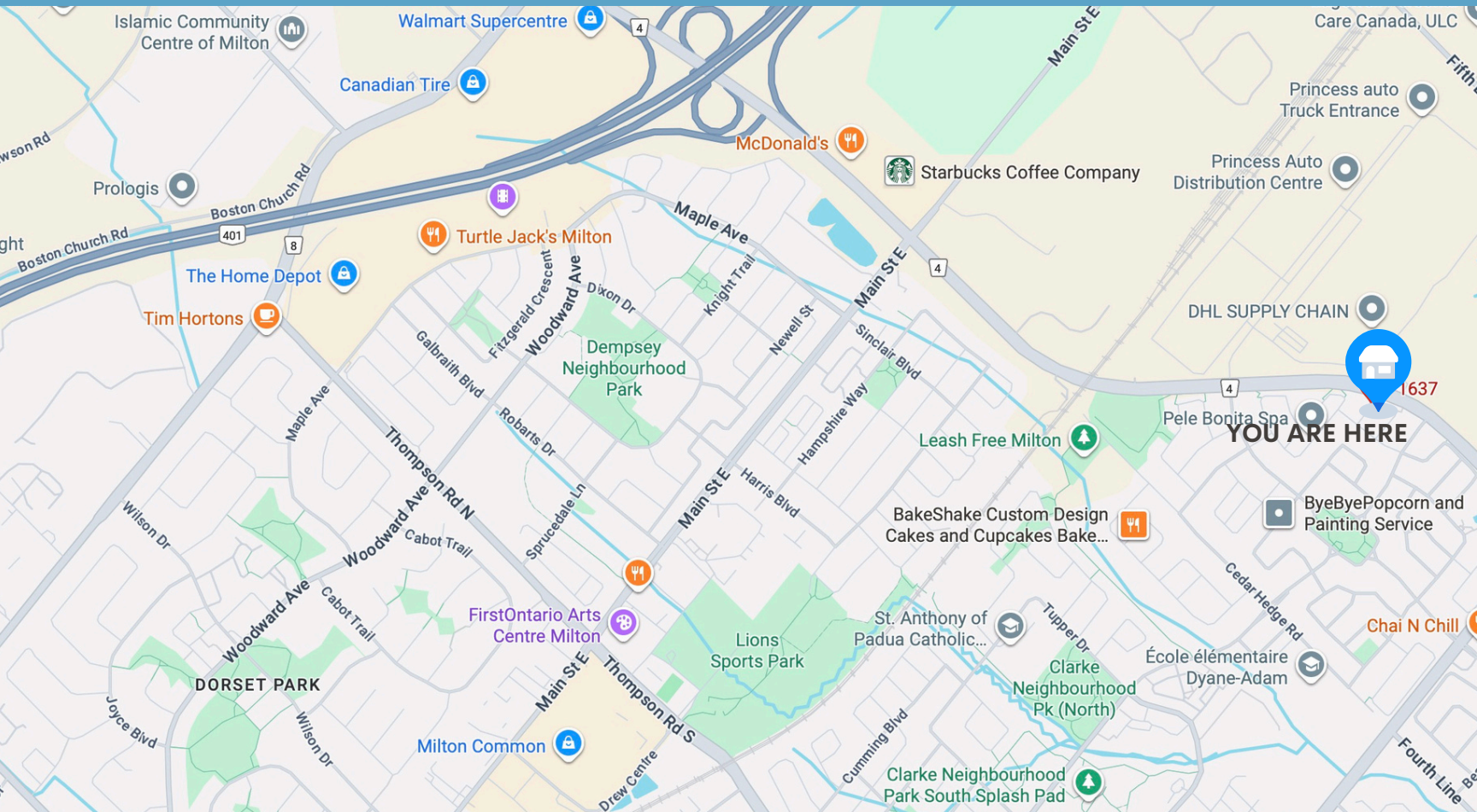
PROPERTY DETAILS

YEAR BUILT	2001
LOT SIZE	22.34 ft x 80.38 ft
SQUARE FOOTAGE	1300 sq ft as per builder floor plans + 505 sq ft basement
GARAGE	1 car garage with garage door opener
DRIVEWAY	Private driveway / Parking for 2 cars
INCLUSIONS	Fridge, Stove, Microwave, Dishwasher, Washer, Dryer, Window Coverings, All ELF's, GDO + remote
ROOF	2012
FURNCE	2019
AC	2019
BASEMENT	Fully Finished with wet bar, powder room, shower room and den
PROPERTY TAX	\$3,593 - 2025
IDEAL CLOSING	Flexible

PUBLIC SCHOOLS	BRUCE TRAIL PS Regular Track JK-Grade 8
	E.W. FOSTER French Immersion Grades 2-5
	W.I. DICK French Immersion Grades 6-8
	MILTON DISTRICT HS Regular Track Grades 9-12 / French Immersion Grades 9-12

CATHOLIC SCHOOLS	ST. ANTHONY OF PADUA CES Regular Track JK-Grade 8
	ST. PETER French Immersion Grades 1-5
	BISHOP REDING CSS Regular Track Grades 9-12
	ST. KATERI TEKAKWITHA CSS French Immersion Grades 9-12

MILTON, ONTARIO





PROPERTY LISTED BY:

Andrew Roach, Broker
Lisa Roach, Sales Representative

475 Main St E, Milton, ON L9T 1R1
(289) 270-1719



Meadowtowne Realty, Brokerage
Independently Owned and Operated

Purchasers should satisfy themselves as to the accuracy of the information contained in this feature sheet. Although all details are believed to be accurate, we assume no responsibility for the information contained herein.