



400 MICKEY COURT
MILTON, ON

ROACH
family
REAL ESTATE TEAM



WELCOME HOME!

Set on a whisper-quiet court in Milton's sought-after Scott neighbourhood, this Mattamy Hazelnut model blends designer finishes with everyday comfort. No sidewalk means a 4 car driveway plus double car garage. Inside, the wainscoting, coffered ceilings and gas fireplace elevate the sunlit great room. The chef's kitchen features granite counters, under-cabinet lighting, gas range and an oversized island, made for gathering. Upstairs offers four bedrooms, second-floor laundry, and a primary retreat with his-and-hers walk-in closets and a spa like ensuite. The finished basement adds a luxury bar, lounge, gym, office/5th bedroom, 3-pc bath and ample storage. Outside, unwind on the patio with sunset skies and escarpment views. This is refined family living, beautifully done.

You'll love calling this home!





Why Families Love Life on Mickey Court

Scott is one of those Milton pockets that feels both peaceful and connected. West Milton's escarpment backdrop brings trails, ponds, and parkland into everyday life, with family-sized homes on quiet streets. Exactly the kind of setting where kids can bike, neighbours say hi, and evenings feel calm. Daily errands stay simple with convenient with ample amenities and a short jaunt to Downtown.

Schools Close By

Families have a strong mix of public, Catholic, and French-language options serving the area. Local choices include Escarpment View PS and Milton DHS, with Catholic options such as Queen of Heaven CES and St Francis Xavier CSS, plus French-language schools like ÉÉ Dyane-Adam and ÉS Gaétan Gervais.

Parks and Recreation

This is where Scott really shines. The Sherwood Community Centre anchors the neighbourhood with a twin-pad arena, pool facilities, a library, and fitness/active living spaces—perfect for hockey nights, swim lessons, and weekend drop-ins. Beyond the neighbourhood, Milton's wider parks and trail network makes it easy to stay active, and the escarpment is right there for family hikes. Conservation Halton destinations like Kelso (trails and seasonal attractions, including the Kelso Cove waterpark) and Crawford Lake (scenic trails year-round) are nearby favourites for quick outdoor escapes.



LIVING ROOM





DINING ROOM





KITCHEN





GREAT ROOM





PRIMARY





BEDROOMS





BASEMENT



BACKYARD



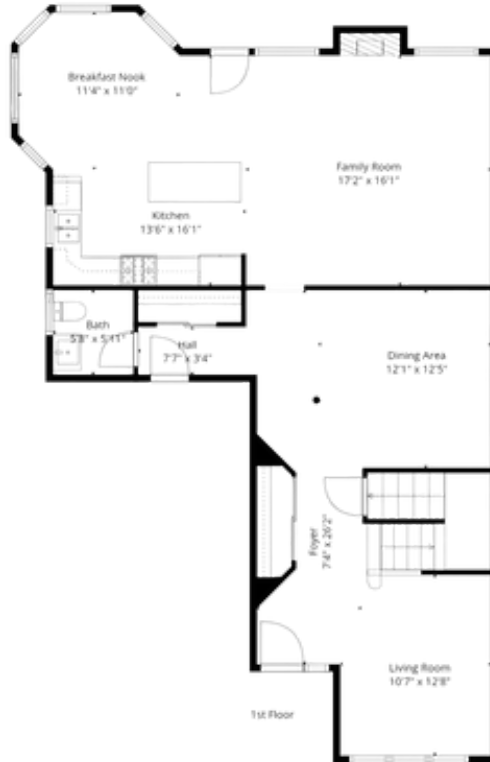
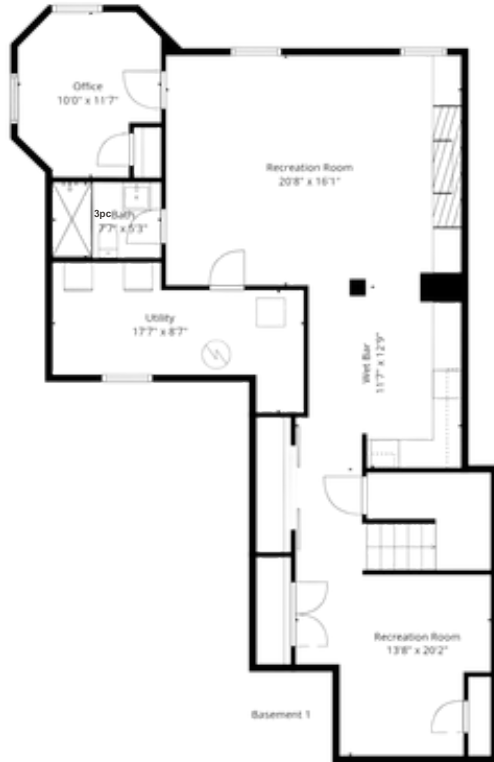


10 THINGS WE LOVE ABOUT OUR HOME



1. Our home is nestled on an extremely quiet court, unobstructed from a sidewalk, in the highly sought after Scott neighbourhood with magnificent views of the escarpment.
2. The warmth and friendliness of our neighbours make our street feel like home, providing a true sense of community and belonging to our family.
3. We cherish peaceful weekend mornings on our spacious front porch, savouring a coffee and a good book as the sun rises.
4. Thanks to the exposure of our home and the abundance of windows, our space is filled with natural sunlight throughout the year, creating an uplifting atmosphere that enhances our sense of wellness and happiness.
5. Our main floor features an open, thoughtfully designed layout that offers seamless flow – creating the ideal setting for both comfortable everyday living and entertaining guests.
6. The kitchen is fantastic for hosting gatherings and meal preparation due to the large central island.
7. We love our second-floor laundry room which provides remarkable convenience and comfort to our busy daily lives.
8. Our elegantly finished basement retreat provides the ultimate in versatility and comfort, perfect for those family movie nights, a home office for remote work, a fitness area and a space designed for effortless entertainment.
9. Our spacious bedrooms have accommodated our childrens' growth over the years, with ample space for study, personal time and get-togethers with their friends.
10. Our expansive backyard patio and yard have provided the perfect setting for play time, lively summer barbecues, and relaxing evenings enjoying beautiful sunset views.

FLOOR PLAN



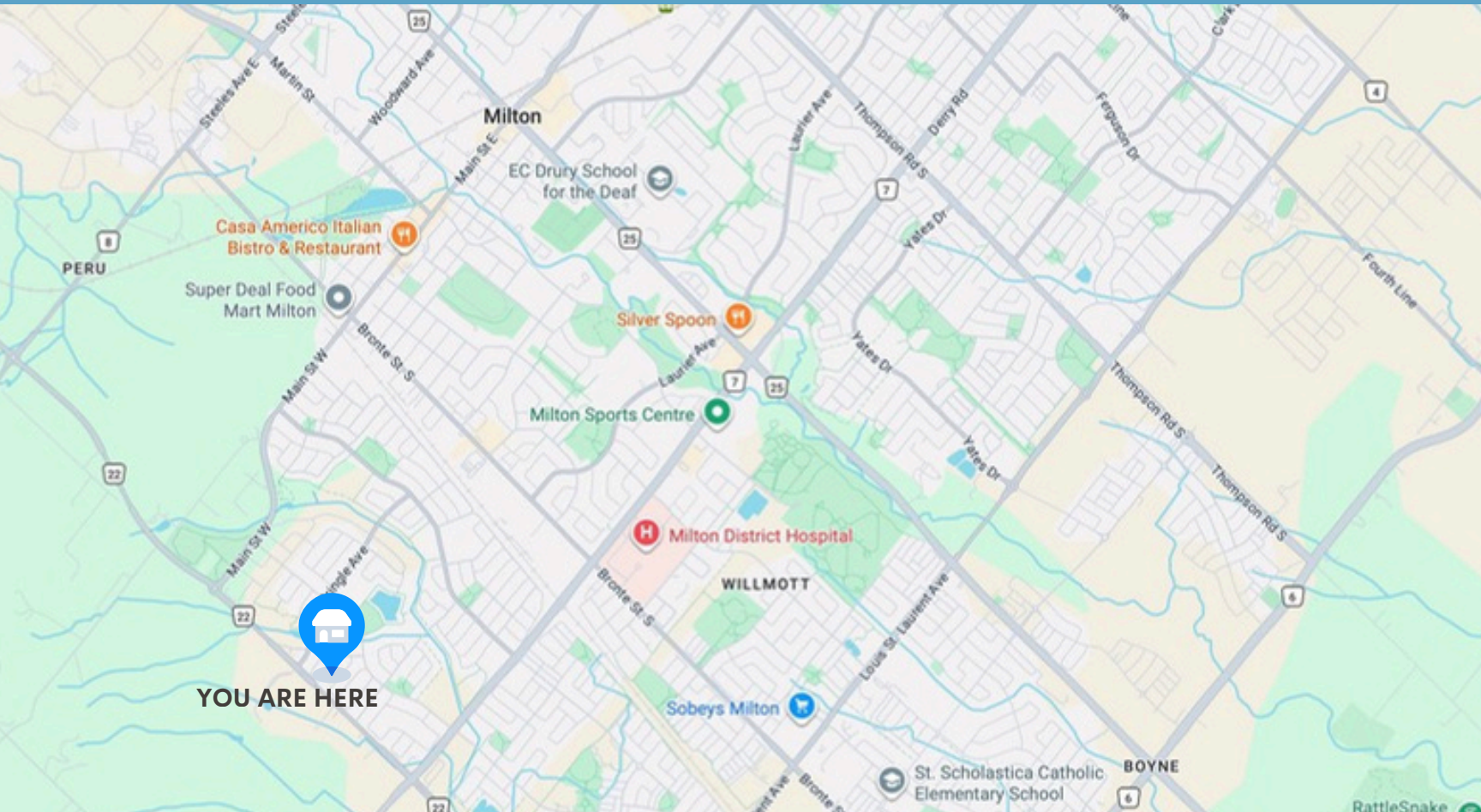
PROPERTY DETAILS

| | |
|----------------|--|
| YEAR BUILT | 2011 |
| LOT SIZE | 43.08 ft x 88.72 ft |
| SQUARE FOOTAGE | 2746 sq ft as per builder floor plans + 1005 sq ft finished basement |
| GARAGE | 2 car garage |
| DRIVEWAY | Private driveway / Parking for 4 cars |
| INCLUSIONS | Fridge, Gas Stove, OTR Microwave, Dishwasher, Washer, Dryer, Window Coverings, All ELF's, Bar Fridge in basement, GDO + remote |
| RENTAL | Hot Water Tank |
| ROOF | 2011 |
| FURNCE | 2011 |
| AC | 2011 |
| BASEMENT | Fully Finished with luxury wet bar, exercise room, 3pc bathroom, office/bedroom and tons of storage |
| PROPERTY TAX | \$5,782- 2025 |
| IDEAL CLOSING | June/July 2026 |

PUBLIC SCHOOLS ESCARPMENT VIEW PS Regular Track JK-Grade 8
MARTIN STREET PS French Immersion Grades 2-8
MILTON DISTRICT HS Regular Track Grades 9-12 / French Immersion Grades 9-12

CATHOLIC SCHOOLS QUEEN OF HEAVEN CES Regular Track JK-Grade 8
ST. BENEDICT French Immersion Grades 1-8
ST. FRANCIS XAVIER CSS Regular Track Grades 9-12
ST. KATERI TEKAKWITHA CSS French Immersion Grades 9-12

MILTON, ONTARIO



YOU ARE HERE



ROACH

family
REAL ESTATE TEAM



PROPERTY LISTED BY:

Andrew Roach, Broker
Lisa Roach, Sales Representative

475 Main St E, Milton, ON L9T 1R1
(289) 270-1719



Meadowtowne Realty, Brokerage
Independently Owned and Operated

Purchasers should satisfy themselves as to the accuracy of the information contained in this feature sheet. Although all details are believed to be accurate, we assume no responsibility for the information contained herein.